

TRUCK CARRIED FORKLIFTS

CHECK OUT THE REST OF OUR PRODUCTS AT
WWW.DONKEYFORKLIFT.COM

EASY TO MAINTAIN

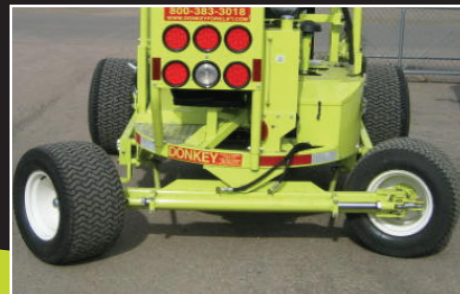
EASY TO OPERATE

FAST TRAVEL SPEED

Donkey Forklifts have a low operating weight and a dependable mounting system. They are suitable for single axle trucks. It dismounts and is at work in under 30 seconds. Smart backup alarms, strobe lights, a salt corrosion package, safety training manual and safety video are all standard features when you purchase a Donkey Forklift.



Container Handling Configuration



Four Wheel Configuration



Single Axle Truck Configuration



Low Profile Configuration



DONKEY

FORKLIFTS

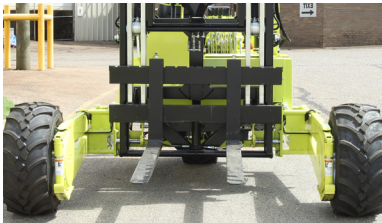
DISTRIBUTED BY:

2730 HWY 15 BAYSPRINGS, MS 39422 • 800-383-3018 OR (601) 764-4121
EMAIL: INFO@DONKEYFORKLIFT.COM • WWW.DONKEYFORKLIFT.COM

 **PRODUCT GUIDE**



With an intelligent use of aluminum throughout, Donkey Forklifts keep weight low and strength high. The simple final drive design offers trouble-free operation.



Customized load spacing fits your needs. Donkey Forklifts have large, automotive style disc brakes on both front wheels that provide impressive stopping ability.



The spacious operator's compartment and centered driver's position provide superb visibility and comfort. Picture window visibility improves productivity and minimizes product damage.



Skid Steer Tire



Turf Tire



Terra Tire



BURRO

For smaller jobs on improved terrain, ask about our Burro Truck Carried Forklift. Lifts 3,000 pounds to 65" and weighs only 1,400 pounds.

FEATURES

SPECIFICATIONS*

	D12-3K	D12-4K	D12-4CH	D12-4.5K	M12-5K
Load Capacity	3,000 lb.	4,000 lb.	4,000 lb.	4,500 lb.	5,000 lb.
Wheels Driven- Standard	2- Opt.3WD	2- Opt. 3 WD	2- Opt. 3WD	2- Opt. 3WD	3
Load Space- Standard	53"	53"	64"	53"	59"
Load Space- Optional	59"/ 64"	59"/ 64"	59"	59"/ 64"	64"/ 68"
Drive Tires- Standard	27x10.5x12	27x10.5x15	27x10.5x15	29x12.5x15	29x12.5x15
Steer Tires- Standard	23x10.5x12	23x10.5x12	23x10.5x12	26x12.5x15	26x12.5x15
Mast/ Fork Lift- Standard	70"	70"	70"	70"	70"
Overall Lowered Height	97"	97"	97"	100"	101.25"
Weight (apx)	3,100 lb.	3,200 lb	3,400 lb.	3,700 lb.	3,900 lb.
Tilt Forward/ Backward	7º/8º	7º/8º	7º/8º	9º/6º	7º/8º
Scissor Reach					
Single Stage	27", 36", 44", 56"	27", 36", 44", 56"	27", 36", 44", 56"	27", 36", 44", 56"	27", 36", 44", 56"
Two Stage	36", 44", 56"	36", 44", 56"	36", 44", 56"	36", 44", 56"	36", 44", 56"
Overall Width- Standard	80"	80"	91"	83"	89"
Overall Length- Without Forks	96.5"	96.5"	104.75"	96.75"	100.25"
Overhang on Transport	74"	74"	74"	73"	74.25"
Length Under Transport	22.5"	22.5"	30.75"	23.75"	26"
Ground Clearance	6"	6"	6"	7.75"	9.5"
Outside Turning Radius	80"	80"	91"	80"	89"
Side Shift	Std. 4"	Std. 4"	Std. 4"	Std. 4"	Std. 4"
Transmission	GM Hydra-Matic	GM Hydra-Matic	GM Hydra-Matic	GM Hydra-Matic	GM Hydra-Matic
Brakes	Auto. Style Disc.	Auto. Style Disc.	Auto. Style Disc.	Auto. Style Disc.	Auto. Style Disc.
Speed	15. mph	15. mph	15. mph	15. mph	15. mph

ENGINE

Standard Engine	D1305 liquid cooled Kubota diesel- 25 HP Tier 4 Final Compliant
Optional Engine	V1505 liquid cooled Kubota diesel- 33 HP Interim Tier 4
Optional Engine	WG1605 liquid cooled Kubota gasoline- 50 HP Current Emission Standards

MASTS/ OPTIONAL

Single Stage	D12-3K	67", 82", 88"
	D12-4K	67", 82", 88"
	D12-4CH	82", 88"
	D12-4.5K	82", 88"
	M12-5K	82", 88"
Two Stage	D12-3K	67", 72", 96", 120"
	D12-4K	67", 72", 96", 120"
	D12-4CH	96"
	D12-4.5K	72", 96", 120"
	M12-5K	72", 96", 120"



WARRANTY: 1 year
Mounting kit — Fixed Plates-Standard
Visit www.donkeyforklift.com for more specifications

*ALL SPECIFICATIONS SUBJECT TO CHANGE WITHOUT NOTICE OR OBLIGATION